

Version 3 Last updated 19 November 2021

ab217773

Human CD105

SimpleStep ELISA[®] Kit

For the quantitative measurement of CD105 in human serum, plasma, cell culture supernatants, and cell and tissue extract samples.

This product is for research use only and is not intended for diagnostic use.

Table of Contents

1. Overview	1
2. Protocol Summary	2
3. Precautions	3
4. Storage and Stability	3
5. Limitations	4
6. Materials Supplied	4
7. Materials Required, Not Supplied	5
8. Technical Hints	5
9. Reagent Preparation	7
10. Standard Preparation	9
11. Sample Preparation	10
12. Plate Preparation	13
13. Assay Procedure	14
14. Calculations	16
15. Typical Data	17
16. Typical Sample Values	19
17. Assay Specificity	24
18. Species Reactivity	25
19. Troubleshooting	26
20. Notes	27

1. Overview

CD105 *in vitro* SimpleStep ELISA® (Enzyme-Linked Immunosorbent Assay) kit is designed for the quantitative measurement of CD105 protein in human serum, plasma, cell culture supernatant, and cell and tissue extract samples.

The SimpleStep ELISA® employs an affinity tag labeled capture antibody and a reporter conjugated detector antibody which immunocapture the sample analyte in solution. This entire complex (capture antibody/analyte/detector antibody) is in turn immobilized via immunoaffinity of an anti-tag antibody coating the well. To perform the assay, samples or standards are added to the wells, followed by the antibody mix. After incubation, the wells are washed to remove unbound material. TMB substrate is added and during incubation is catalyzed by HRP, generating blue coloration. This reaction is then stopped by addition of Stop Solution completing any color change from blue to yellow. Signal is generated proportionally to the amount of bound analyte and the intensity is measured at 450 nm. Optionally, instead of the endpoint reading, development of TMB can be recorded kinetically at 600 nm.

CD105 is a major glycoprotein of vascular endothelium. CD105 is involved in the regulation of angiogenesis. It may play a critical role in the binding of endothelial cells to integrins and/or other RGD receptors. CD105 acts as TGF-beta co-receptor and is involved in the TGF-beta/BMP signaling cascade. It is required for GDF2/BMP9 signaling through SMAD1 in endothelial cells and it modulates TGF-beta1 signaling through SMAD3. CD105 is a homodimer that forms a heteromeric complex with the signaling receptors for transforming growth factor-beta: TGFBR1 and/or TGFBR2. It is able to bind TGF-beta 1, and 3 efficiently and TGF-beta 2 less efficiently. Circulating soluble form of CD105 is elevated in patients with preeclampsia, atherosclerosis and certain cancers including breast, colorectal, and myeloid malignancies.

2. Protocol Summary

Prepare all reagents, samples, and standards as instructed



Add 50 μ L standard or sample to appropriate wells



Add 50 μ L Antibody Cocktail to all wells



Incubate at room temperature for 1 hour



Aspirate and wash each well three times with 350 μ L 1X Wash Buffer
PT



Add 100 μ L TMB Substrate to each well and incubate for 10 minutes.



Add 100 μ L Stop Solution and read OD at 450 nm

3. Precautions

Please read these instructions carefully prior to beginning the assay.

- All kit components have been formulated and quality control tested to function successfully as a kit.
- We understand that, occasionally, experimental protocols might need to be modified to meet unique experimental circumstances. However, we cannot guarantee the performance of the product outside the conditions detailed in this protocol booklet.
- Reagents should be treated as possible mutagens and should be handled with care and disposed of properly. Please review the Safety Datasheet (SDS) provided with the product for information on the specific components.
- Observe good laboratory practices. Gloves, lab coat, and protective eyewear should always be worn. Never pipet by mouth. Do not eat, drink or smoke in the laboratory areas.
- All biological materials should be treated as potentially hazardous and handled as such. They should be disposed of in accordance with established safety procedures.

4. Storage and Stability

Store kit at +4°C immediately upon receipt. Kit has a storage time of 1 year from receipt, providing components have not been reconstituted.

Refer to list of materials supplied for storage conditions of individual components. Observe the storage conditions for individual prepared components in the Materials Supplied section.

5. Limitations

- Assay kit intended for research use only. Not for use in diagnostic procedures.
- Do not mix or substitute reagents or materials from other kit lots or vendors. Kits are QC tested as a set of components and performance cannot be guaranteed if utilized separately or substituted.

6. Materials Supplied

Item	Quantity	Storage Condition
Human CD105 Capture Antibody 10X	600 µL	+4°C
Human CD105 Detector Antibody 10X	600 µL	+4°C
Human CD105 Lyophilized Recombinant Protein	2 Vials	+4°C
Antibody Diluent 5BI	6 mL	+4°C
Wash Buffer PT 10X	20 mL	+4°C
Cell Extraction Buffer PTR 5X	10 mL	+4°C
Cell Extraction Enhancer Solution 50X	1 mL	+4°C
TMB Substrate	12 mL	+4°C
Stop Solution	12 mL	+4°C
Sample Diluent NS	50 mL	+4°C
Anti-tag coated microplate (12 x 8 well strips)	96 Wells	+4°C
Plate Seal	1	+4°C
Denaturant	500 µL	+4°C

7. Materials Required, Not Supplied

These materials are not included in the kit, but will be required to successfully perform this assay:

- Microplate reader capable of measuring absorbance at 450 or 600 nm.
- Method for determining protein concentration (BCA assay recommended).
- Deionized water.
- Multi- and single-channel pipettes.
- Tubes for standard dilution.
- Plate shaker for all incubation steps.
- Optional: Phenylmethylsulfonyl Fluoride (PMSF) (or other protease inhibitors).

8. Technical Hints

- Samples generating values higher than the highest standard should be further diluted in the appropriate sample dilution buffers.
- Avoid foaming or bubbles when mixing or reconstituting components.
- Avoid cross contamination of samples or reagents by changing tips between sample, standard and reagent additions.
- Ensure plates are properly sealed or covered during incubation steps.
- Complete removal of all solutions and buffers during wash steps is necessary to minimize background.
- As a guide, typical ranges of sample concentration for commonly used sample types are shown below in Sample Preparation (section 11).
- All samples should be mixed thoroughly and gently.
- Avoid multiple freeze/thaw of samples.
- Incubate ELISA plates on a plate shaker during all incubation steps.
- When generating positive control samples, it is advisable to change pipette tips after each step.

- The provided Cell Extraction Enhancer Solution 50X and the Denaturant may precipitate when stored at + 4°C. To dissolve, warm briefly at + 37°C and mix gently. The Cell Extraction Enhancer Solution 50X and the Denaturant can be stored at room temperature to avoid precipitation.
- To avoid high background always add samples or standards to the well before the addition of the antibody cocktail.
- This kit is sold based on number of tests. A 'test' simply refers to a single assay well. The number of wells that contain sample, control or standard will vary by product. Review the protocol completely to confirm this kit meets your requirements. Please contact our Technical Support staff with any questions.

9. Reagent Preparation

- Equilibrate all reagents to room temperature (18-25°C) prior to use. The kit contains enough reagents for 96 wells. The sample volumes below are sufficient for 48 wells (6 x 8-well strips); adjust volumes as needed for the number of strips in your experiment.
- Prepare only as much reagent as is needed on the day of the experiment. Capture and Detector Antibodies have only been tested for stability in the provided 10X formulations.

9.1 1X Cell Extraction Buffer PTR (For cell and tissue extracts only):

Prepare 1X Cell Extraction Buffer PTR by diluting Cell Extraction Buffer PTR 5X to 1X with deionized water. To make 10 mL 1X Cell Extraction Buffer PTR combine 8 mL deionized water and 2 mL Cell Extraction Buffer PTR 5X. Mix thoroughly and gently. If required protease inhibitors can be added.

9.2 1X Cell Extraction Buffer PTR + Enhancer (For cell and tissue extracts only):

Prepare 1X Cell Extraction Buffer PTR + Enhancer by diluting Cell Extraction Buffer PTR 5X and 50X Cell Extraction Enhancer Solution to 1X with deionized water. To make 10 mL 1X Cell Extraction Buffer PTR + Enhancer combine 7.8 mL deionized water, 2 mL Cell Extraction Buffer PTR 5X and 200 µL Cell Extraction Enhancer Solution 50X. Mix thoroughly and gently. If required protease inhibitors can be added.

9.3 Sample Diluent NS + Enhancer (For serum, plasma, and cell supernatants only):

Prepare Sample Diluent NS + Enhancer by diluting Sample Diluent NS with Cell Extraction Enhancer Solution 50X. To make 10 mL Sample Diluent NS + Enhancer combine 9.8 mL Sample Diluent NS and 200 µL Cell Extraction Enhancer Solution 50X. Mix thoroughly and gently. Prepare fresh dilution on day of experiment.

9.4 1X Wash Buffer PT:

Prepare 1X Wash Buffer PT by diluting Wash Buffer PT 10X with deionized water. To make 50 mL 1X Wash Buffer PT combine 5 mL Wash Buffer PT 10X with 45 mL deionized water. Mix thoroughly and gently.

9.5 Antibody Cocktail:

Prepare Antibody Cocktail by diluting the capture and detector antibodies in Antibody Diluent 5BI. To make 3 mL of the Antibody Cocktail combine 300 μ L 10X Capture Antibody and 300 μ L 10X Detector Antibody with 2.4 mL Antibody Diluent 5BI. Mix thoroughly and gently.

10. Standard Preparation

- Always prepare a fresh set of standards for every use.
- Discard working standard dilutions after use as they do not store well.
- The following section describes the preparation of a standard curve for duplicate measurements (recommended).

10.1 IMPORTANT: If the protein standard vial has a volume identified on the label, reconstitute the CD105 protein standard by adding that volume of Diluent indicated on the label.

Alternatively, if the vial has a mass identified, reconstitute the CD105 protein standard by adding 500 µL Diluent.

For **serum, plasma and cell culture supernatant samples measurements**,

reconstitute the lyophilized CD105 protein standard by adding Sample Diluent NS + Enhancer.

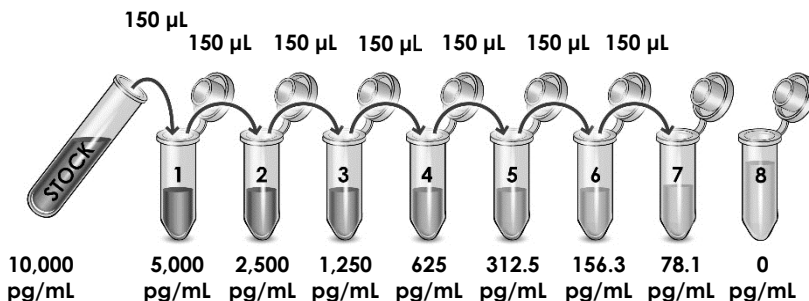
For **cell and tissue extract samples measurements**, reconstitute the lyophilized CD105 protein standard by adding 1X Cell Extraction Buffer PTR + Enhancer.

Hold at room temperature for 10 minutes and mix thoroughly and gently. This is the 10,000 pg/mL **Stock Standard** Solution.

10.2 Label eight tubes, Standards 1– 8.

10.3 Add 150 µL of appropriate diluent (see step 10.1) into tube number 1 and 150 µL of appropriate diluent into numbers 2-8.

10.4 Use the Stock Standard to prepare the following dilution series. Standard #8 contains no protein and is the Blank control:



11. Sample Preparation

Typical Sample Dynamic Range	
Sample Type	Range
Human Serum	0.07 – 2.225%
Human Plasma - Heparin	0.14 – 2.225%
Human Plasma - EDTA	0.14 – 2.225%
Human Plasma - Citrate	0.14 – 2.225%
HUVEC Cell Extract	2.5 – 40 µg/mL
Placenta Tissue Extract	5.625 – 90 µg/mL
Heart Tissue Extract	3.75 – 60 µg/mL

11.1 Plasma:

Collect plasma using citrate, EDTA or heparin. Centrifuge samples at 2,000 x g for 10 minutes. To 89 volume parts of plasma, add 11 volume parts of Denaturant. Mix thoroughly and gently. Incubate at room temperature for 10 minutes. Dilute samples 40-fold into Sample Diluent NS and assay. All subsequent dilutions should be made in Sample Diluent NS + Enhancer. Store un-diluted plasma samples at -20°C or below for up to 3 months. Avoid repeated freeze-thaw cycles.

11.2 Serum:

Samples should be collected into a serum separator tube. After clot formation, centrifuge samples at 2,000 x g for 10 minutes and collect serum. To 89 volume parts of serum, add 11 volume parts of Denaturant. Mix thoroughly and gently. Incubate at room temperature for 10 minutes. Dilute samples 40-fold into Sample Diluent NS and assay. All subsequent dilutions should be made in Sample Diluent NS + Enhancer. Store un-diluted serum at -20°C or below. Avoid repeated freeze-thaw cycles.

11.3 Cell Culture Supernatants:

Centrifuge cell culture media at 2,000 x g for 10 minutes to remove debris. Collect supernatants. To 89 volume parts of supernatant, add 11 volume parts of Denaturant. Mix thoroughly and gently. Incubate at room temperature for 10 minutes. Dilute samples 40-fold into Sample Diluent NS and assay. All subsequent dilutions should be made in Sample Diluent NS + Enhancer. Store un-diluted samples at -20°C or below. Avoid repeated freeze-thaw cycles.

11.4 Preparation of extracts from cell pellets:

- 11.4.1 Collect non-adherent cells by centrifugation or scrape to collect adherent cells from the culture flask. Typical centrifugation conditions for cells are 500 x g for 5 minutes at 4°C.
- 11.4.2 Rinse cells twice with PBS.
- 11.4.3 Solubilize pellet at 2×10^7 cell/mL in chilled 1X Cell Extraction Buffer PTR + Enhancer.
- 11.4.4 Incubate on ice for 20 minutes.
- 11.4.5 Centrifuge at 18,000 x g for 20 minutes at 4°C.
- 11.4.6 Transfer the supernatants into clean tubes and discard the pellets.
- 11.4.7 To 89 volume parts sample, add 11 volume part of Denaturant. Mix thoroughly and gently
- 11.4.8 Incubate samples at room temperature for 10 minutes.
- 11.4.9 Dilute samples 40-fold in 1X Cell Extraction Buffer PTR. Mix thoroughly and gently.
- 11.4.10 Dilute samples further to desired concentration in 1X Cell Extraction Buffer PTR + Enhancer.

11.5 Preparation of extracts from adherent cells by direct lysis (alternative protocol):

- 11.5.1 Remove growth media and rinse adherent cells 2 times in PBS.
- 11.5.2 Solubilize the cells by addition of chilled 1X Cell Extraction Buffer PTR + Enhancer directly to the plate (use 750 μ L - 1.5 mL 1X Cell Extraction Buffer PTR + Enhancer per confluent 15 cm diameter plate).
- 11.5.3 Scrape the cells into a microfuge tube and incubate the lysate on ice for 15 minutes.
- 11.5.4 Centrifuge at 18,000 x g for 20 minutes at 4°C.
- 11.5.5 Transfer the supernatants into clean tubes and discard the pellets.

- 11.5.6 To 89 volume parts sample, add 11 volume part of Denaturant. Mix thoroughly and gently
- 11.5.7 Incubate samples at room temperature for 10 minutes.
- 11.5.8 Dilute samples 40-fold in 1X Cell Extraction Buffer PTR. Mix thoroughly and gently.
- 11.5.9 Dilute samples further to desired concentration in 1X Cell Extraction Buffer PTR + Enhancer.

11.6 Preparation of extracts from tissue homogenates:

- 11.6.1 Tissue lysates are typically prepared by homogenization of tissue that is first minced and thoroughly rinsed in PBS to remove blood (dounce homogenizer recommended).
- 11.6.2 Homogenize 100 to 200 mg of wet tissue in 500 μ L – 1 mL of chilled 1X Cell Extraction Buffer PTR + Enhancer. For lower amounts of tissue adjust volumes accordingly.
- 11.6.3 Incubate on ice for 20 minutes.
- 11.6.4 Centrifuge at 18,000 x g for 20 minutes at 4°C.
- 11.6.5 Transfer the supernatants into clean tubes and discard the pellets.
- 11.6.6 To 89 volume parts sample, add 11 volume part of Denaturant. Mix thoroughly and gently
- 11.6.7 Incubate samples at room temperature for 10 minutes.
- 11.6.8 Dilute samples 40-fold in 1X Cell Extraction Buffer PTR. Mix thoroughly and gently.
- 11.6.9 Dilute samples further to desired concentration in 1X Cell Extraction Buffer PTR + Enhancer.

12. Plate Preparation

- The 96 well plate strips included with this kit are supplied ready to use. It is not necessary to rinse the plate prior to adding reagents.
- Unused plate strips should be immediately returned to the foil pouch containing the desiccant pack, resealed and stored at 4°C.
- For each assay performed, a minimum of two wells must be used as the zero control.
- For statistical reasons, we recommend each sample should be assayed with a minimum of two replicates (duplicates).
- Differences in well absorbance or “edge effects” have not been observed with this assay.

13. Assay Procedure

- Equilibrate all materials and prepared reagents to room temperature prior to use.
 - We recommend that you assay all standards, controls and samples in duplicate.
 - Prepare all reagents, working standards, and samples as directed in the previous sections.
- 13.1** Prepare all reagents, working standards, and samples as directed in the previous sections.
 - 13.2** Remove excess microplate strips from the plate frame, return them to the foil pouch containing the desiccant pack, reseal and return to 4°C storage.
 - 13.3** Add 50 µL of all sample or standard to appropriate wells.
 - 13.4** Add 50 µL of the Antibody Cocktail to each well.
 - 13.5** Seal the plate and incubate for 1 hour at room temperature on a plate shaker set to 400 rpm.
 - 13.6** Wash each well with 3 x 350 µL 1X Wash Buffer PT. Wash by aspirating or decanting from wells then dispensing 350 µL 1X Wash Buffer PT into each well. Wash Buffer PT should remain in wells for at least 10 seconds. Complete removal of liquid at each step is essential for good performance. After the last wash invert the plate and tap gently against clean paper towels to remove excess liquid.
 - 13.7** Add 100 µL of TMB Substrate to each well and incubate for 10 minutes in the dark on a plate shaker set to 400 rpm.
Given variability in laboratory environmental conditions, optimal incubation time may vary between 5 and 20 minutes.
Note: The addition of Stop Solution will change the color from blue to yellow and enhance the signal intensity about 3X. To avoid signal saturation, proceed to the next step before the high concentration of the standard reaches a blue color of O.D.600 equal to 1.0.
 - 13.8** Add 100 µL of Stop Solution to each well. Shake plate on a plate shaker for 1 minute to mix. Record the OD at 450 nm. This is an endpoint reading.
 - 13.9** Alternative to 13.7 – 13.8: Instead of the endpoint reading at 450 nm, record the development of TMB Substrate kinetically. Immediately after addition of TMB Development Solution begin recording the blue color development with elapsed

time in the microplate reader prepared with the following settings:

Mode	Kinetic
Wavelength:	600 nm
Time:	up to 20 min
Interval:	20 sec - 1 min
Shaking:	Shake between readings

Δ **Note:** that an endpoint reading can also be recorded at the completion of the kinetic read by adding 100 µL Stop Solution to each well and recording the OD at 450 nm.

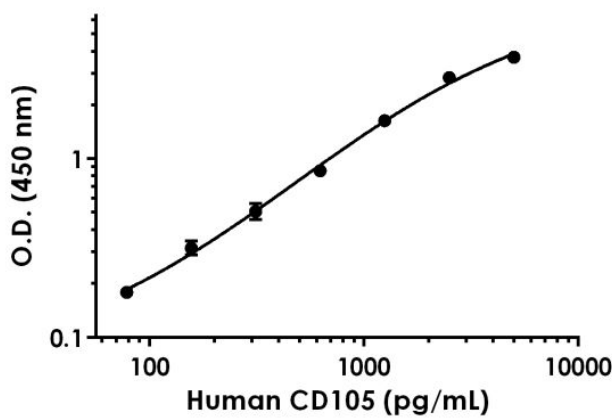
13.10 Analyze the data as described below.

14. Calculations

- 14.1 Calculate the average absorbance value for the blank control (zero) standards. Subtract the average blank control standard absorbance value from all other absorbance values.
 - 14.2 **Create a standard curve** by plotting the average blank control subtracted absorbance value for each standard concentration (y-axis) against the target protein concentration (x-axis) of the standard. Use graphing software to draw the best smooth curve through these points to construct the standard curve.
- Δ **Note:** Most microplate reader software or graphing software will plot these values and fit a curve to the data. A four parameter curve fit (4PL) is often the best choice; however, other algorithms (e.g. linear, semi-log, log/log, 4 parameter logistic) can also be tested to determine if it provides a better curve fit to the standard values.
- 14.3 Determine the concentration of the target protein in the sample by interpolating the blank control subtracted **absorbance values against the standard curve**. Multiply the resulting value by the appropriate sample dilution factor, if used, to obtain the concentration of target protein in the sample.
 - 14.4 Samples generating absorbance values greater than that of the highest standard should be further diluted and reanalyzed. Similarly, samples which measure at an absorbance values less than that of the lowest standard should be retested in a less dilute form.

15. Typical Data

Typical standard curve – data provided for demonstration purposes only. A new standard curve must be generated for each assay performed.



Standard Curve Measurements			
Concentration (pg/mL)	O.D 450 nm		Mean O.D
	1	2	
0	0.072	0.0703	0.071
78.125	0.173	0.184	0.178
156.25	0.337	0.296	0.317
312.5	0.470	0.545	0.507
625	0.837	0.875	0.856
1,250	1.581	1.686	1.633
2,500	2.836	2.856	2.846
5,000	3.684	3.721	3.703

Figure 1. Example of human CD105 standard curve in Sample Diluent NS + Enhancer. The CD105 standard curve was prepared as described in Section 10. Raw data values are shown in the table. Background-subtracted data values (mean +/- SD) are graphed.

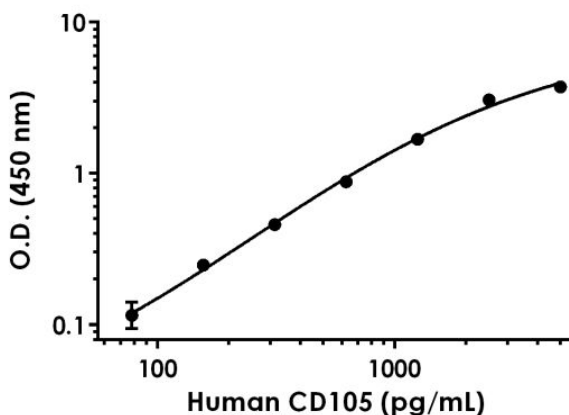


Figure 2. Example of human CD105 standard curve in 1X Cell Extraction Buffer PTR + Enhancer. The CD105 standard curve was prepared as described in Section 10. Raw data values are shown in the table. Background-subtracted data values (mean +/- SD) are graphed.

16. Typical Sample Values

SENSITIVITY –

The MDD was determined by calculating the mean of zero standard replicates and adding 2 standard deviations then extrapolating the corresponding concentration.

Sample Diluent Buffer	n=	Minimal Detectable Dose
1X Cell Extraction Buffer PTR + Enhancer	24	11.1 pg/mL
Sample Diluent NS + Enhancer	8	17.5 pg/mL

RECOVERY –

Three concentrations of recombinant human CD105 protein were spiked in duplicate to the indicated biological matrix to evaluate signal recovery in the working range of the assay.

Sample Type	Average % Recovery	Range (%)
2.11% Human Serum	107	84 - 120
2.11% Human Plasma Citrate	80	74 - 84
2.11% Human Plasma Heparin	88	71 - 113
2.11% Human Plasma EDTA	100	84 - 119
2.11% DMEM Media +10% FBS	107	95 - 116
HUVEC Cell Extract	103	99 - 110
Placenta Tissue Extract	112	108 - 118
Heart Tissue Extract	106	96 - 119

Linearity of Dilution

Linearity of dilution is determined based on interpolated values from the standard curve. Linearity of dilution defines a sample concentration interval in which interpolated target concentrations are directly proportional to sample dilution.

Native CD105 was measured in serum and plasma samples in a 2-fold dilution series. Sample dilutions are made in Sample Diluent NS + Enhancer.

Recombinant CD105 was spiked into DMEM cell culture media containing 10% FBS and diluted in a 2-fold dilution series in Sample Diluent NS + Enhancer.

Dilution Factor	Interpolated value	2.225% Human Serum	2.225% Human Plasma (Citrate)	2.225% Human Plasma (EDTA)	2.225% Human Plasma (Heparin)	2.225% DMEM Media
Undiluted	pg/mL	2,257	1,635	1,655	1,728	4,280
	% Expected value	100	100	100	100	100
2	pg/mL	998.9	755.8	810.6	743	1,976
	% Expected value	89	92	98	86	92
4	pg/mL	497.7	378.4	375.7	407.7	918.8
	% Expected value	88	93	91	94	86
8	pg/mL	262.6	202.1	217.5	213.8	474.7
	% Expected value	93	99	105	99	89
16	pg/mL	136.4	108.1	116.9	124.6	267.6
	% Expected value	97	106	113	115	100

Native CD105 was measured in the following samples in a 2-fold dilution series. Sample dilutions are made in 1X Cell Extraction Buffer PTR + Enhancer.

Dilution Factor	Interpolated value	40 µg/mL HUVEC cell extract	90 µg/mL placenta tissue extract	60 µg/mL heart tissue extract
Undiluted	pg/mL	2,959	593.8	555.3
	% Expected value	100	100	100
2	pg/mL	1,246	272.4	295
	% Expected value	84	92	106
4	pg/mL	602.2	133.6	134.5
	% Expected value	81	90	97
8	pg/mL	308.4	66.54	62.91
	% Expected value	83	90	91
16	pg/mL	150.7	31.80	28.37
	% Expected value	82	86	82

PRECISION –

Mean coefficient of variations of interpolated values from three concentrations of human serum within the working range of the assay.

	Intra-Assay	Inter-Assay
n =	3	5
CV(%)	1.8	3.0

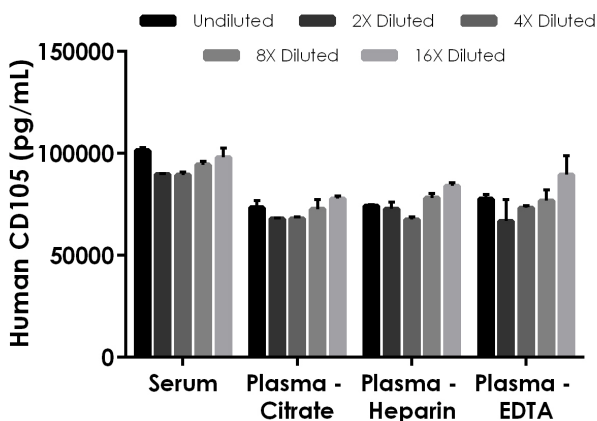


Figure 3. Interpolated concentrations of native CD105 in human serum and plasma samples. The concentrations of CD105 were measured in duplicates, interpolated from the CD105 standard curves and corrected for sample dilution. Undiluted samples are as follows: serum 2.225%, plasma (citrate) 2.225%, plasma (heparin) 2.225% and plasma (EDTA) 2.225%. The interpolated dilution factor corrected values are plotted (mean \pm SD, n=2). The mean CD105 concentration was determined to be 94,646 pg/mL in neat serum, 71,971 pg/mL in neat plasma (citrate), 75,408 pg/mL in neat plasma (heparin), and 76,842 pg/mL in neat plasma (EDTA).

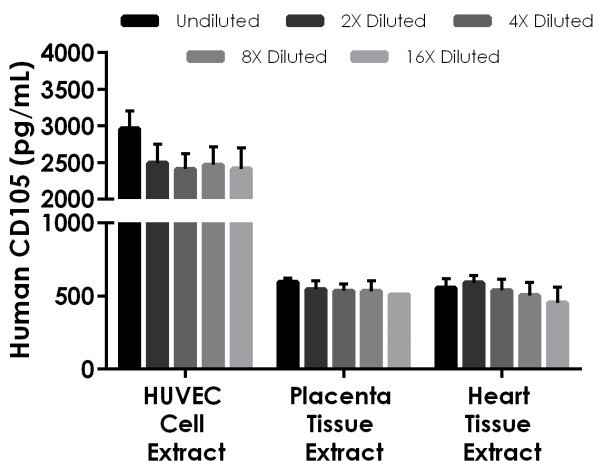


Figure 4. Interpolated concentrations of native CD105 in HUVEC cell extract based on a 40 µg/mL extract load, human placenta tissue extract based on a 90 µg/mL extract load, and human heart tissue extract based on a 60 µg/mL extract load. The concentrations of CD105 were measured in duplicate and interpolated from the CD105 standard curve and corrected for sample dilution. The interpolated dilution factor corrected values are plotted (mean +/- SD, n=2). The mean CD105 concentration was determined to be 2548 pg/mL in HUVEC cell extract, 542.9 pg/mL in placenta tissue extract, and 528.1 pg/mL in heart tissue extract.

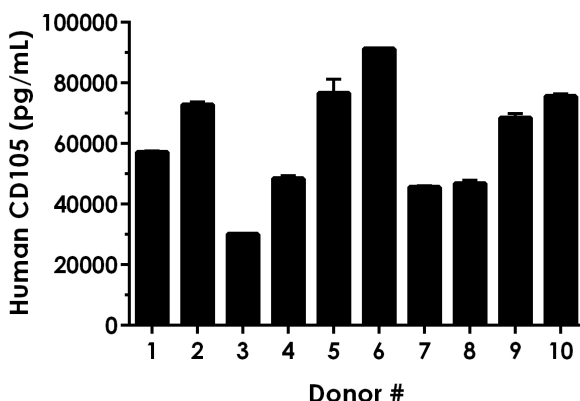


Figure 5. Serum from ten individual healthy female human donors was measured in duplicate. Interpolated dilution factor corrected values are plotted (mean +/- SD, n=2). The mean CD105 concentration was determined to be 61,333 pg/mL with a range of 30,103 – 91,256 pg/mL.

17. Assay Specificity

This kit recognizes both native and recombinant human CD105 protein in serum, plasma, and cell culture supernatant, cell and tissue extract samples only.

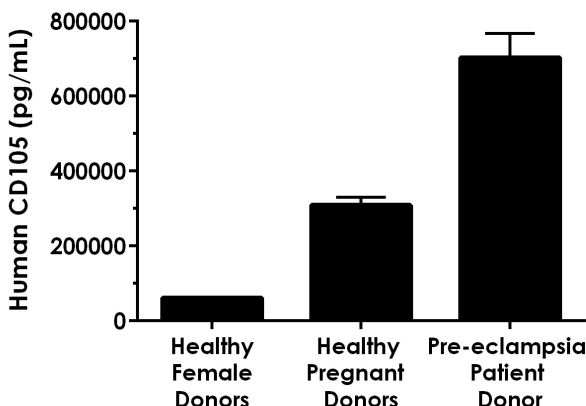


Figure 6. Serum levels of CD105 are increased during the third trimester of pregnancy, especially in women with pre-eclampsia. Serum from 10 healthy (not pregnant) female individuals, 5 healthy females in the third trimester of pregnancy (pooled), and 1 individual female in the third trimester showing signs of mild pre-eclampsia were tested for levels of CD105. The concentrations of CD105 were measured from serum in samples in 3 different dilutions in duplicates and interpolated from the CD105 standard curve. The interpolated values are plotted (mean \pm SD, $n=3$). The mean CD105 concentration was determined to be 61,333 pg/mL in healthy female donor serum, 30,895 pg/mL in healthy pregnant donor serum, and 703,119 pg/mL in pre-eclampsia patient serum.

Urine, milk, and saliva samples have not been tested with this kit.

INTERFERENCE

Recombinant human TGF-beta 1 was prepared at 50 ng/mL and 1 ng/mL and tested for interference. No interference with was observed.

18. Species Reactivity

This kit recognizes human CD105 protein.

Recombinant mouse CD105 was prepared at 5 ng/mL and tested for reactivity. No reactivity was observed.

Species reactivity was also determined by measuring 2.225% serum samples of various species, interpolating the protein concentrations from the human standard curve, and expressing the interpolated concentrations as a percentage of the protein concentration in human serum assayed at the same dilution.

Species	% Cross-reactivity
Rat	8

Reactivity < 3% was determined for the following species:

- Mouse
- Cow

Please contact our Technical Support team for more information.

19. Troubleshooting

Problem	Reason	Solution
Difficulty pipetting lysate; viscous lysate.	Genomic DNA solubilized	Prepare 1X Cell Extraction Buffer PTR (without enhancer). Add enhancer to lysate after extraction.
Poor standard curve	Inaccurate Pipetting	Check pipettes
	Improper standard dilution	Prior to opening, briefly spin the stock standard tube and dissolve the powder thoroughly by gentle mixing
Low Signal	Incubation times too brief	Ensure sufficient incubation times; increase to 2 or 3 hour standard/sample incubation
	Inadequate reagent volumes or improper dilution	Check pipettes and ensure correct preparation
	Incubation times with TMB too brief	Ensure sufficient incubation time until blue color develops prior addition of Stop solution
Large CV	Plate is insufficiently washed	Review manual for proper wash technique. If using a plate washer, check all ports for obstructions.
	Contaminated wash buffer	Prepare fresh wash buffer
Low sensitivity	Improper storage of the ELISA kit	Store your reconstituted standards at -80°C, all other assay components 4°C. Keep TMB substrate solution protected from light.
Precipitate in Diluent	Precipitation and/or coagulation of components within the Diluent.	Precipitate can be removed by gently warming the Diluent to 37°C.

20. Notes

Technical Support

Copyright © 2020 Abcam, All Rights Reserved. The Abcam logo is a registered trademark. All information / detail is correct at time of going to print.

For all technical or commercial enquiries please go to:

www.abcam.com/contactus

www.abcam.cn/contactus (China)

www.abcam.co.jp/contactus (Japan)